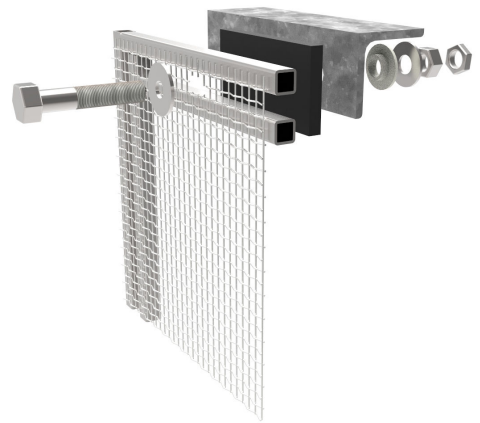


Equipment Protection: Mini Shield

Mini type shields are single layer construction providing benefits similar to the Ladder type, intended for use in areas where personnel will not come into direct contact with the radiant shields.

Key Features

- Designed primarily for protection of equipment.
- Uses the same heavy duty radiant mesh as Ladder shields.
- All stainless steel type 316L construction.
- Lower cost and weight
- Excellent light transmission
- Excellent ventilation
- Quick on site installation and removal
- Supplied complete with all necessary A4 Stainless Steel fasteners.



Locker Mini Shield Installations



Mini Heatshields protecting the Gorilla V derrick Structure

Mini Heatshields used to enclose an escape route at Ineos Grangemouth processing plant.



Mini Heatshields protecting Boom Hoist Control Point

